



# CS55

## Quick-fit™ dual cone 5 1/4" ceiling speaker 8 Ohm/100V

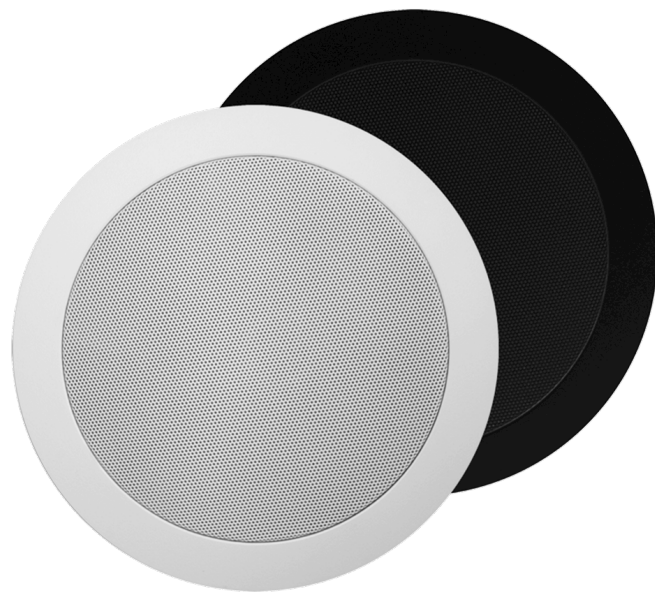
### Highlights:

- FastCon™ connections
- QuickFix installation system
- Multi-tapping 100V line transformer
- 5 1/4" dual cone driver

The CS series loudspeakers are high-quality in-ceiling loudspeakers, delivering exceptional sound quality and value for a wide variation of applications, ranging from paging and announcements to background music systems in a wide range of business applications, including hotels, restaurants and pubs, corporate offices, retail stores, etc. The CS55 in-ceiling loudspeaker features a 5 1/4" dual cone driver with a continuous power handling of 10 Watt and a maximum power handling of 20 Watt. The dual-cone construction makes the CS55 the perfect match for a wide variation of general purpose indoor applications ranging from paging and announcement systems to background music systems. A multi-tapping line transformer fitted with Fast-con™ allows fast and smooth connections to 100 Volt public address or low impedance systems. The mounting of the loudspeaker into the ceiling is achieved with a Quick-fix mechanism, offering great installers convenience and lifetime stability. The construction of the speakers' housing is made out of high-quality ABS while the front is covered by a solid powder-coated steel grill. It comes available in different colours, while custom painting is possible for a total blending into any environment.

### Applications:

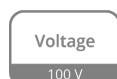
- Bars, restaurants
- Retail
- Hotels
- Public facilities
- Corporate spaces



### Impedance:



### Voltage:



## System specifications:

Speaker type	Dual cone	
Max. Power	20 W	
RMS Power	10 W	
Impedance	8 $\Omega$ (CS55)	
	16 $\Omega$ (CS55D)	
Line Transformer Tappings	1	6 W / 1667 $\Omega$
	2	3 W / 3333 $\Omega$
	3	1.5 W / 6667 $\Omega$
Sensitivity (1W/1m)	93 dB	
Sound Pressure (Max. W/1m)	109 dB	
Frequency	Response ( $\pm$ 3 dB)	70 Hz - 14 kHz
	Range (-10 dB)	55 Hz - 16 kHz
Dispersion	Conical	140° (Half space (flush mounted in ceiling), average 100 Hz to 10 kHz @ -6 dB)
Connectors	Multi-tap Fast-con™ connections	
Drivers	5 1/4"	

## Product Features:

Dimensions	202.5 x 67 mm (Ø x D)	
Weight	0.750 kg (CS55)	
	0.550 kg (CS55D)	
Construction	ABS	
Front finish	Steel grill	
Cut-out measurement	165 mm (Ø)	
Built-in depth	62 mm	
Mounting & handling	QuickFit™ installation system (4-screw)	
Colours	White (NCS S 1000-N) (CS55)	
	White (RAL9010) (CS55/W)	
	Black (RAL9005) (CS55/B)	
	White (NCS S 1000-N) (CS55D)	
	White (RAL9010) (CS55D/W)	

Shipping & Ordering:

Packaging	Cardboard box
Shipping weight & volume	0.820 kg - 0.0040 Cbm (CS55)
	0.650 kg - 0.0040 Cbm (CS55D)

Architects’ and Engineers’ Specifications:


The ceiling mount loudspeaker shall be a dual-cone type equipped with a 5 ¼” low frequency driver and fitted with a line transformer allowing it to be used on both low impedance (8 Ohm) and 100 Volt distributed lines.

It shall have an RMS power handling of 10 Watt with a maximum power handling of 20 Watt and the frequency response (±3 dB) shall range from 70 Hz to 14 kHz. The sensitivity shall be 93 dB when measuring with an input signal of 1 Watt at a distance of 1 meter, while the maximum continuous sound pressure level shall be 109 dB. The nominal dispersion shall be a 140° conical coverage pattern at -6dB (average 100 Hz - 10 kHz).

The loudspeaker shall be switchable between 8 Ohm and constant voltage operation, and shall be fitted with a multi-tapping line transformer with tapings for 6 Watt, 3 Watt and 1.5 Watt including an 8 Ohm bypass. Fast and smooth connection of the system shall be possible using a Fast-con™ multi-tapping connector.

The speakers frame shall be constructed in high quality ABS material which comes available in both white (RAL9010) and black (RAL9005) colours and is fitted with a removable steel grill allowing custom painting to make it blend-in with any environment. Mounting of the speaker into the ceiling shall be possible using a 4-screw Quick-fix installation system.

The speaker shall have a diameter of 202.5 mm, a depth of 67 mm and the weight shall not exceed 0.75 kg. The speaker shall fit in a mounting hole with a cutout diameter of 165 mm and a build-in depth of 62 mm.

	
<b>CS55</b>	<b>Product description:</b> QUICK FIT CEILING SPEAKER 6 W/100V
<b>Weight:</b> 780 g	<b>Outer dimensions:</b> (w x h x d) Ø 202,5 x 67
	<b>Unit height:</b> N/A

