

innex Omni



360° Freedom. Tailored to You.

Innex Omni combines advanced AI-powered audio and smart video tracking to create smarter, smoother meetings that help everyone stay seen, heard, and fully engaged.



4 Cam Lens



4K 360°



AI Built-in



Multi-People
Tracking



Voice Direction
Tracking



Two-Way Noise
Cancellation



Multi-Video
Modes



Image
Settings



Remote
Control



Security &
Privacy

Contact

 funtechinnovation.com

 info@funtechinnovation.com

Follow us



Beyond Detection: Recognize, Track, and Engage in 360°

Featuring a high-resolution camera and AI chips for both audio and video, Innex Omni delivers sharp images, clear sound, and intelligent tracking for smarter meetings.



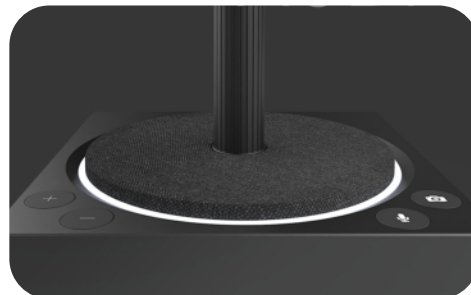
8MP Camera

Get clear video and the best view for any meeting.



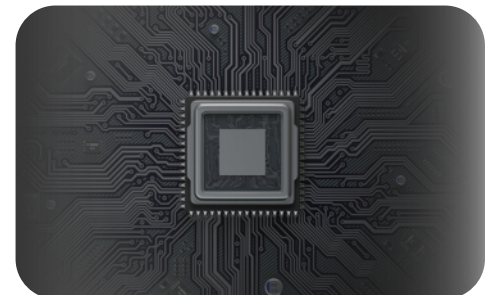
Pan the View

Press and hold the button to smoothly pan the view.



Memory Mode

Store and recall user's preferred settings.



Stay Privacy

Easily cover the camera lens for privacy when not in use.



2-Way Noise Cancellation

Reduces background noise from both sides of the call for better clarity.



Just One Click

Switch modes, adjust views, and manage settings freely.



AI-Driven Video Modes : Engaging, Adaptive, Intelligent.

Omni features smart AI modes like Spotlight, Picture-in-Picture, and Focus Zone—designed to keep attention where it matters and elevate every meeting.



Spotlight Mode

Freely pin any participant, and the camera will seamlessly follow their every move.



Picture in Picture

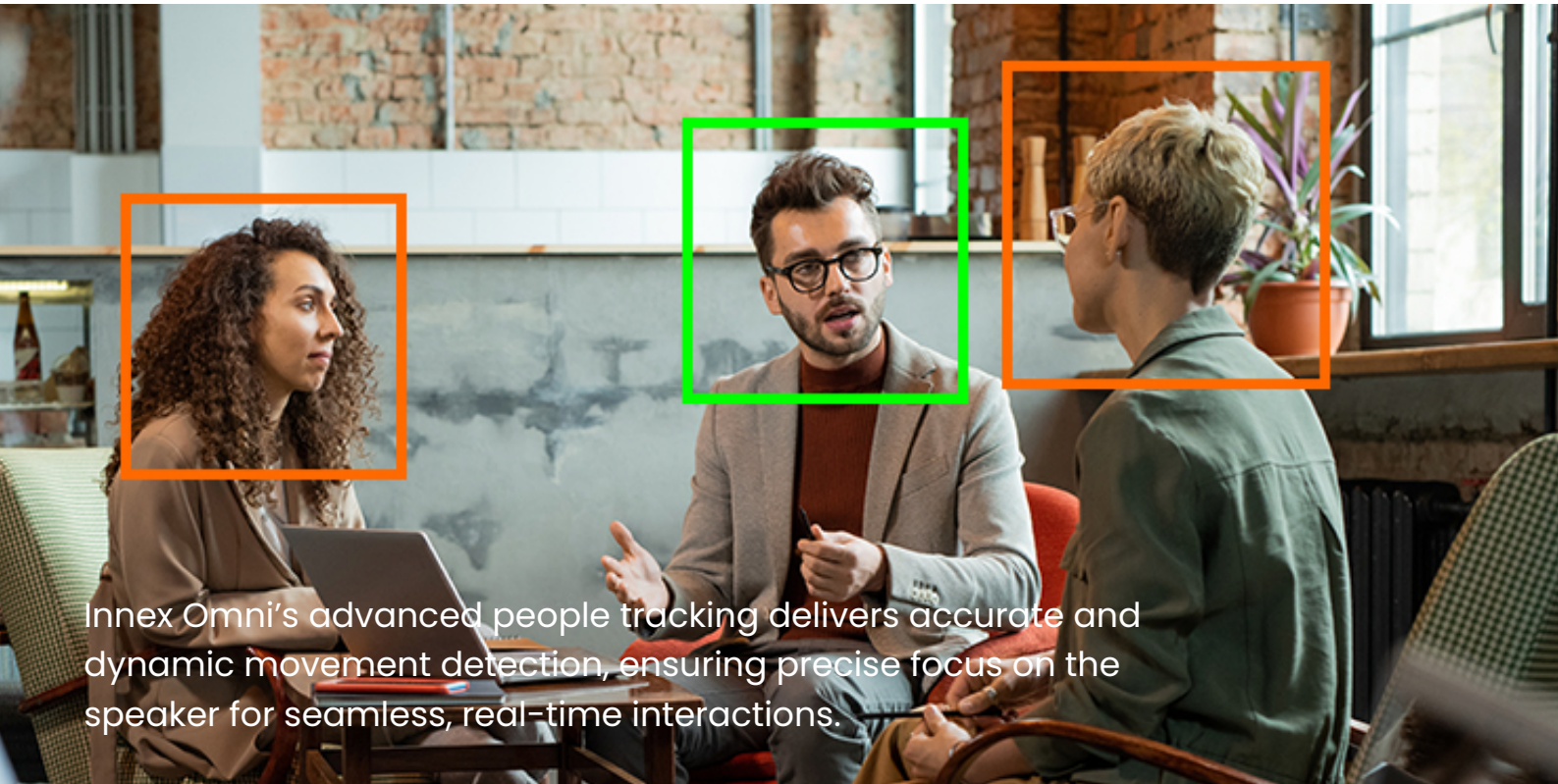
Easily pin your presenter and take full control of the main view with simple zoom and direction adjustments.



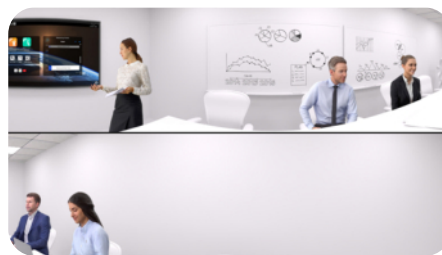
Focus Zone

Enhances voices within a customizable area—90°, 135°, or 180°—while reducing sound from outside to keep conversations clear and distraction-free.

Switch It Up. Stay in the Spotlight.



 Gallery



 Conversation



 Speaker Tracking



 Auto Framing



 Manual (EPTZ)

innex Omni

SPECS

Model		Omni
Camera	Lens Resolution	8 Megapixels
	Lens Quantity	4
	Stitching Technology	Dynamic Real-Time Stitching Technology
	Resolution & Frame Rate	3840x2160 @30fps 2560x1440 @30fps 1920x1080 @30fps 1280x720 @30fps 640x360 @30fps
	Focus Distance	60 cm / 2 ft
	Field of View	H-FOV: 168.1° ; V-FOV: 74.1°
	Max. Output Field of View	Horizontal 360° / Vertical 60°
	HDR	Yes
	Image AI	Support human body detection and framing
	Flicker	60Hz
	Auto White Balance	Yes
	Auto Exposure	Yes
	Camera Embedded Mode	1. Gallery (Default mode) 2. Speaker tracking 3. Spotlight 4. Picture in Picture 5. Auto-Framing 6. Conversation 7. Focus Zone : 90°, 135°, 180° 8. Manual (EPTZ)
Microphone	Microphone	4 unidirectional microphones
	Automatic Gain Control (AGC)	Yes
	Active Noise Suppression (ANS)	Yes
	AI Noise Cancellation	Yes
	AI Beamforming	Yes
	Far Field Voice	Yes
	Acoustic Echo Cancellation	Yes
	De-reverberation	Yes
	Bi-Directional Noise Cancellation	Yes
	Sensitivity	94dB SPL @1KHZ Min.: 29 Typ.: 26 Max.:23 dBFS
	Signal to Noise Ratio	65dB
	Pick Up Distance	80dp up to 5m / 16.5ft
	Response Frequency	40Hz to 20k Hz (AEC, MIC AI off) 40 Hz to 8 KHz (AEV, MIC AI on)

innex Omni

SPECS

Model		Omni
Speaker	Speaker Max. Input Power	3W x2
	Speaker Sensitivity	92±3dB@0.5m
	Speaker Impedance	4 ohm
	Speaker Frequency Range	100HZ-20K Hz (Speaker AI off) 100 Hz to 8 KHz (Speaker AI on)
Ports	DC in	1
	USB-C	1 (3.0)
	Kensington Nano Security Slot	1
Others	Power Consumption	12V 1.5A
	Touch Buttons	1. Camera On/Off 2. Mic On/Off 3. Vol + 4. Vol -
	Remote Control	Support
	LED Status Light	Yes
	Dimension	140 x 140 x 380 mm / 5.5 x 5.5 x 15 in
	Weight	930 g / 2.1 lb
	Package Contents	Remote control x1, Battery (AAA) x2, Power adapter 1.5M x1, Extendable power cable 2M x1, DC to USB-C(12V) converter x1, USB C-C cable 1.5M x1, USB C-A converter x1, Quick Start Guide x1, Warranty card x1, Safety documents