



Surprising definition meets power!
A polyvalent 15" system with accurately designed components,
raising its performance to the maximum level.
Now, all in neodymium!

KEY FEATURES

TRANSDUCER TECHNOLOGY

Passive two-way speaker system composed by one direct radiating 3-inch voice coil, neodymium magnet, 15" low frequency woofer and one 1,75-inch voice coil, PETP diaphragm, neodymium magnet driver loaded in an asymmetrical dispersion horn.

POWER

800 W continuous power in musical program.

Accurate internal passive crossover achieves an optimum performance while including a protection on high frequency driver.

DSP&CONTROL

Recommended presets available for our DSP206, DSP608 and TPD.

DESIGN & ACCESSORIES

Ergonomic handles for an easy handling.

Several accessories allow easy flying. A 35 mm socket for mounting the loudspeaker on a speaker stand is provided at the bottom of the cabinet.

Unique design with black micro-foam cloth.

M8 rigging points.

Multilayer wooden plywood cabinet with Polyurea® coating, offering maximum reliability and strength for high demanding applications.



ASYMMETRICAL
DISPERSION HORN



LIGHT NEODYMIUM
COMPONENTS



HIGH RESISTANT
POLYUREA® PAINT



ACCESSORIES FOR
EASY INSTALLATIONS



MULTIPLE PRESETS
AVAILABLE with external
Amate Audio amplifier & DSP

TECHNICAL FEATURES

Power (musical program)	800 W
Power (AES)	400 W
Nominal impedance	8 Ω
Crossover frequency	2kHz
Frequency range (-10 dB)	45 Hz – 19 kHz
Directivity (HxV)	50° to 100° x 55°
Directivity factor (Q)	12,6
Directivity Index (DI)	11 dB
SPL (1W/1m)	99 dB
Maximum SPL (continuous/1 m)	128 dB
Maximum SPL (peak/ 1m)	131 dB
Components	LF-MF HF
	15" neodymium woofer (3" voice coil) 1.75" PETP diaphragm neodymium driver
Weight	22,5 kg
Dimensions (HxWxD)	689 x 460 x 450 mm
Finish	Multilayer plywood with high resistant black Polyurea® coating
Grille	1.5 mm steel with black micro-foam cloth
Rigging	M8 points
Input connectors	2x NL4MPR Neutrik® Speakon



BOTTOM VIEW



TOP VIEW



FRONTAL VIEW
WITHOUT GRILLE



SIDE VIEW

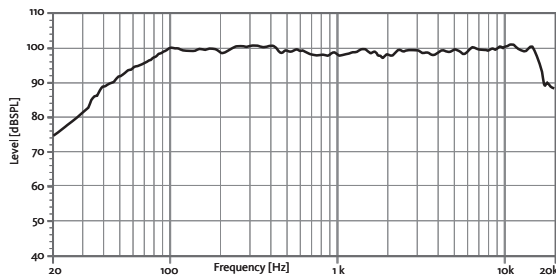
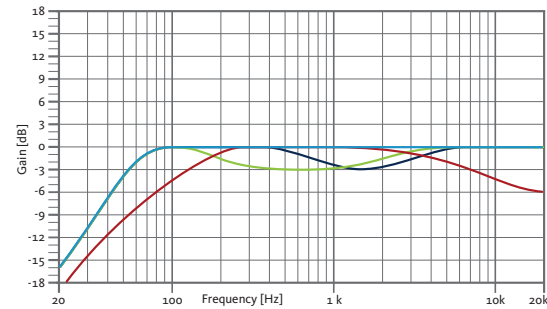


REAR VIEW



CONNECTION PANEL

FREQUENCY RESPONSE 1W/1m

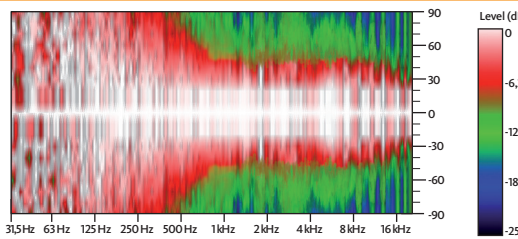
RECOMMENDED PRESETS
With external Amate Audio DSP**FLAT**

Flat response

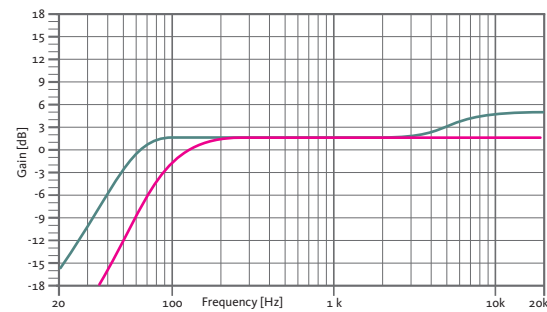
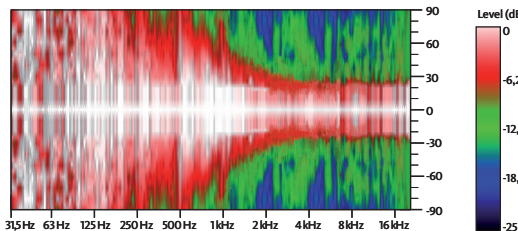
NEARFIELD-3 dB mid frequencies
(800 Hz – 3 kHz)**NEARFIELD+**-3 dB mid frequencies
(200 Hz – 3 kHz)**SPEECH**

-6 dB low/ -6 dB high

HORIZONTAL COVERAGE



VERTICAL COVERAGE

**LONGTHROW**

+3 dB high frequencies

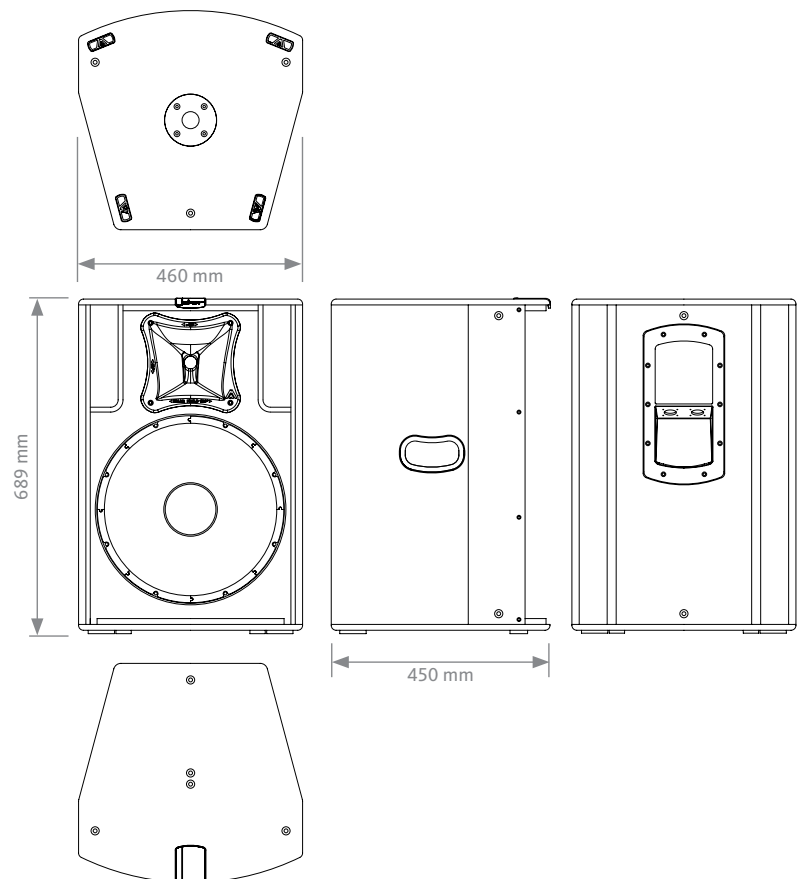
XO ALL

HPF 100 Hz + no delay

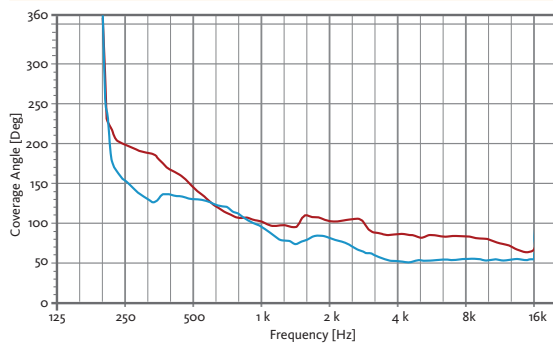
XO POLE

HPF 100 Hz + fixed delay

CAD DRAWING SCHEME

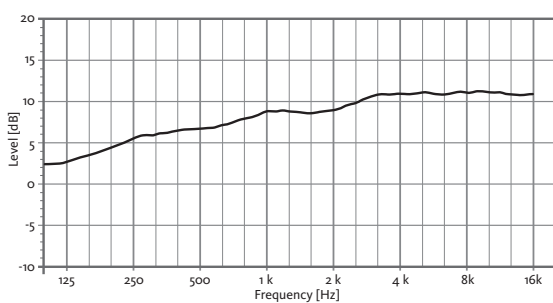


HORIZONTAL & VERTICAL BEAMWIDTH (-6dB point)



HORIZONTAL VERTICAL

DIRECTIVITY INDEX (DI)



JK15N

15" TWO-WAY PASSIVE
SPEAKER SYSTEM

Joker



ACCESSORIES

FLIGHT CASE

FC-JK15 for two units of JK15N



PROTECTIVE COVER

NC-JK15



ADJUSTABLE WALL STAND

SP-35



WALL MOUNT BRACKET

UB-L



FLYING BAR

HR-1215



HOOK FOR FLYING BAR

GT-50HR



M8 RIGGING EYEBOLT

ACR-M8



SAFETY SLING

SC-15



TELESCOPIC DISTANCE ROD

SP/CRTL

Ø: 35 mm
Length: 55 cm ~ 90 cm
Thread: M20



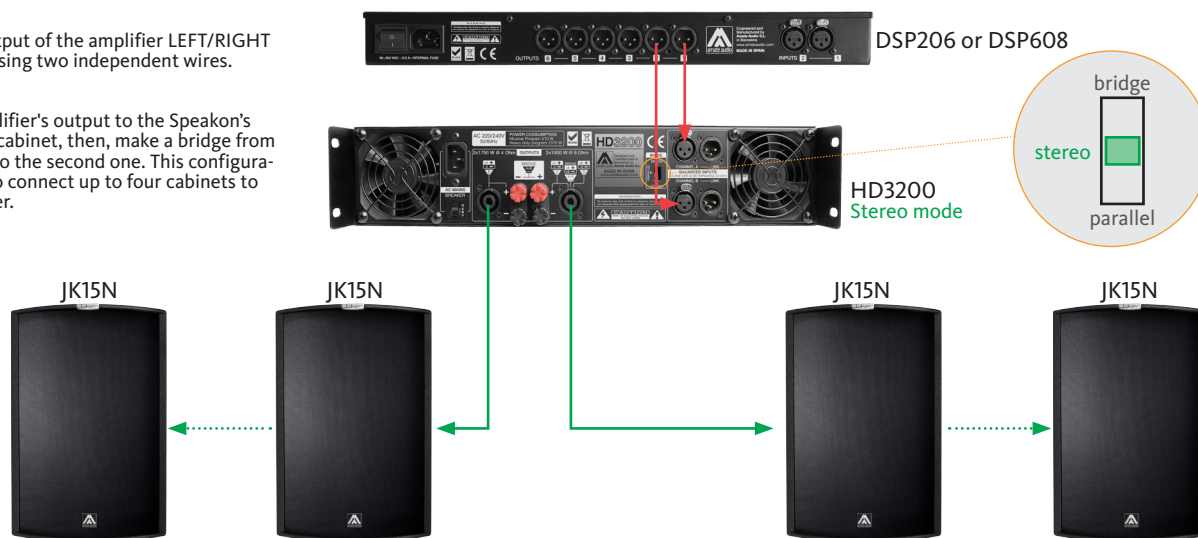
RECOMMENDED CONFIGURATION

FOR 2 UNITS

Connect each output of the amplifier LEFT/RIGHT to each cabinet using two independent wires.

FOR 4 UNITS

Connect the amplifier's output to the Speakon's input of the first cabinet, then, make a bridge from the first cabinet to the second one. This configuration allows you to connect up to four cabinets to the same amplifier.



THE BEST COMBINATION

The best experience of Joker systems is reached with Amate Audio's HD Series amplifiers and DSP206/608 digital signal processors. Factory presets are available to setup the system in a short time.



HD Series – high dynamic professional power amplifiers

DSP Series – digital loudspeakers management system