

X12CLD

12" PASSIVE CLUSTER
ARRAY SYSTEM

Xcellence



A true compact array. The X12CLD is a constant curvature array that combines ultra- compact form with astounding levels of performance. Light-weight, safe and easy to setup and carry, it performs far beyond expectations, thanks to its advanced acoustic design and custom high frequency waveguide.

KEY FEATURES

TRANSDUCER TECHNOLOGY

Two-way passive constant curvature array speaker system composed by one 3.5-inch voice coil, neodymium magnet, 12" loudspeaker and one 2.5-inch titanium diaphragm neodymium driver coupled to a 100° x 15° exclusive high performance waveguide.

POWER

1340 W continuous power in musical program.

Use our Xamp3K to feed the system.

DSP & CONTROL

Recommended presets available for our DSP608.

READY FOR THE CLUB... AND BEYOND

Xcellence DISCO series has been carefully designed to deliver a high sound pressure level while keeping a TOP audio quality. A compact design, but yet with great power handling loudspeakers, makes it suitable for all kind of clubs or other venues requiring high performance passive systems.

DESIGN & ACCESSORIES

Unique design in black & grey colour.

Several accessories allow easy flying. Inter-cabinet connection is set via lateral rigging bars, providing a 15° fixed angle between boxes.

Ergonomic handles for an easy and comfortable transport.

Baltic birch plywood cabinet with Polyurea® coating, offering maximum reliability and strength for touring as well as for high demanding applications.

LONG-TERM RELIABILITY

We have invested in, and applied, the very best knowledge, materials and technology to deliver the ultimate product. Every detail has been considered, featuring the new steel grille with custom punch hole, smart accessories for a trouble-free installation, and the new double-colour Polyurea® coating, not only do they contribute to an extraordinary look, they also look forward high protection and resilience.

X₁₂CLD

12" PASSIVE CLUSTER ARRAY SYSTEM

Xcellence



EXCLUSIVE HIGH
PERFORMANCE
WAVEGUIDE



ARRAY & CLUSTER
APPLICATION



UNIQUE
DESIGN



LIGHT NEODYMIUM
COMPONENTS



HIGH RESISTANT
POLYUREA® PAINT



ACCESSORIES FOR
EASY INSTALLATIONS



MULTIPLE PRESETS
AVAILABLE with external
Amate Audio amplifier & DSP

TECHNICAL FEATURES

Power (musical program)	1200 W (LF) + 140 W (HF)
Power (AES)	600 W (LF) + 70 W (HF)
Nominal impedance	8 Ω (LF) + 8 Ω (HF)
Crossover frequency	800 Hz
Frequency response (-10 dB)	58 Hz – 19 kHz (with external DSP)
Directivity (HxV)	100° x 15°
Directivity factor (Q)	20
Directivity Index (DI)	13 dB
SPL (1W/1m)	99 dB (LF) + 109 dB (HF)
Maximum SPL (continuous/1m)	130 dB (LF) + 130 dB (HF)
Maximum SPL (peak/ 1m)	133 dB (LF) + 133 dB (HF)
Components	LF-MF HF
	12" neodymium woofer (3.5" voice coil) 2.5" titanium diaphragm neodymium driver
Weight	29 kg
Dimensions (HxWxD)	352 x 640 / 680 (including ball lock pins) x 485 mm
Finish	Multilayer baltic birch plywood with high resistant black & grey Polyurea® coating
Grille	1.5 mm steel
Rigging	Stainless-steel integrated rigging bars
Input connectors	2x NL4MPR Neutrik® Speakon



SIDE VIEW



FRONTAL VIEW WITHOUT GRILLE



REAR VIEW



TOP VIEW



CONNECTION PANEL

X12CLD

12" PASSIVE CLUSTER ARRAY SYSTEM

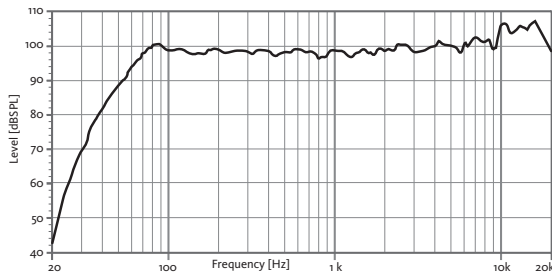
Xcellence



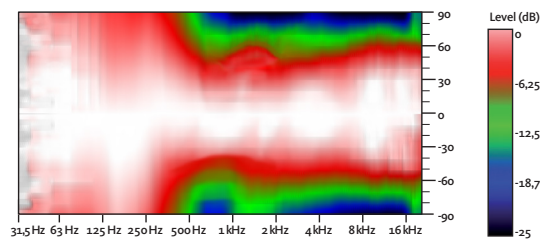
FREQUENCY RESPONSE 1W/1m

(1BOX_FR PRESET) ONE CABINET

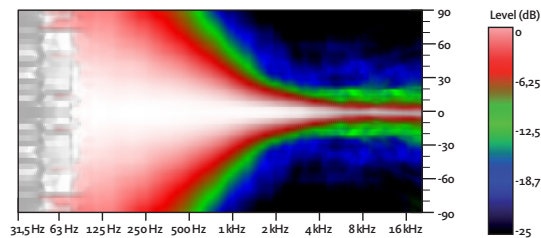
With external Amate Audio DSP608 & Xamp3K Amplifier



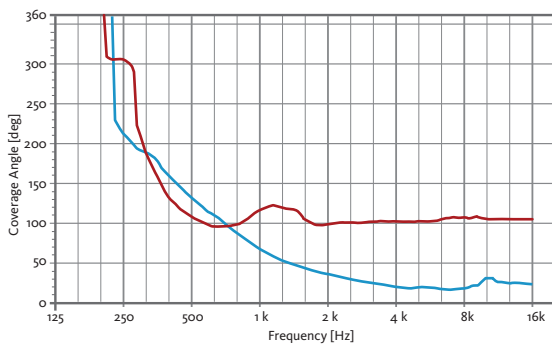
HORIZONTAL COVERAGE



VERTICAL COVERAGE

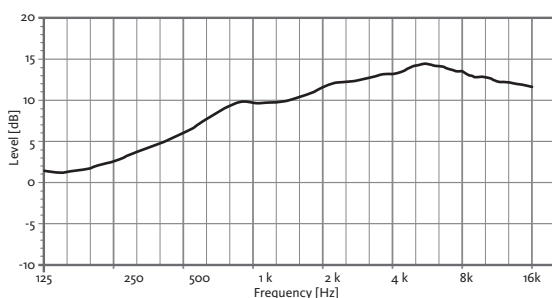


HORIZONTAL & VERTICAL BEAMWIDTH (-6dB point)

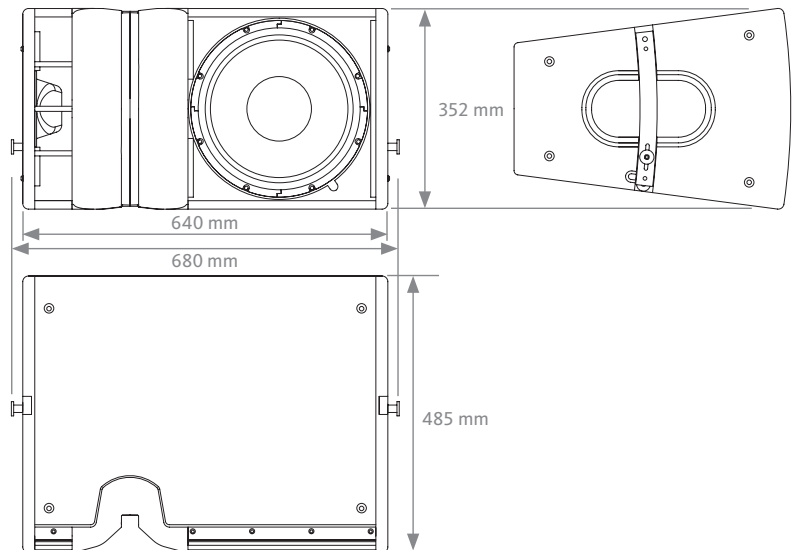


HORIZONTAL VERTICAL

DIRECTIVITY INDEX (Di)

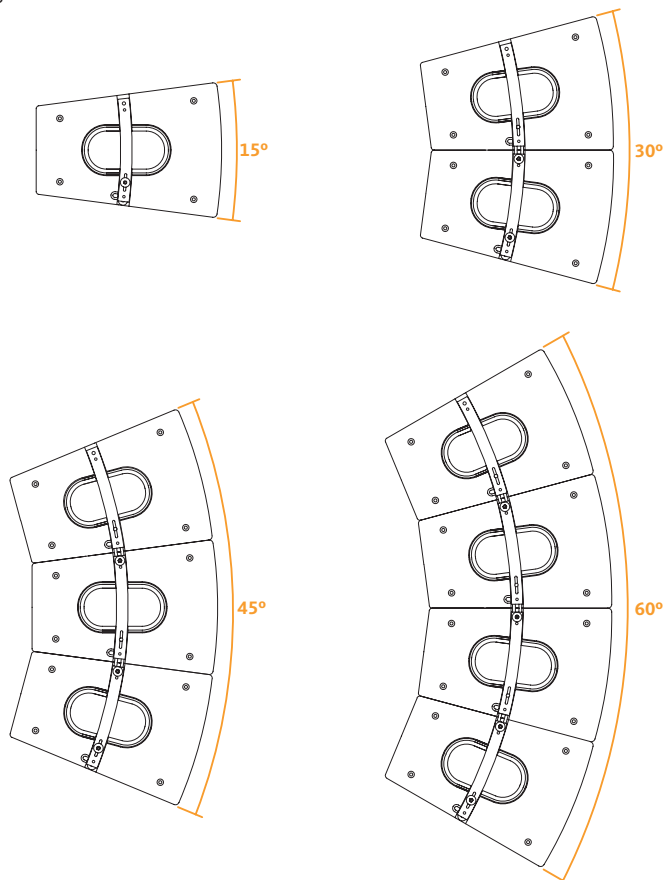


CAD DRAWING SCHEME



CONFIGURATION (MAXIMUM 4 CABINETS)

X12CLD provides extended versatility, by being deployable in either vertical array or horizontal point source cluster configurations; able to provide coverage with exact precision, dramatically reducing undesired reflections and frequency cancellations. Inter-cabinet connection is set via lateral rigging bars, providing a 15° fixed angle between boxes.



X12CLD

12" PASSIVE CLUSTER
ARRAY SYSTEM

Xcellence



ACCESSORIES

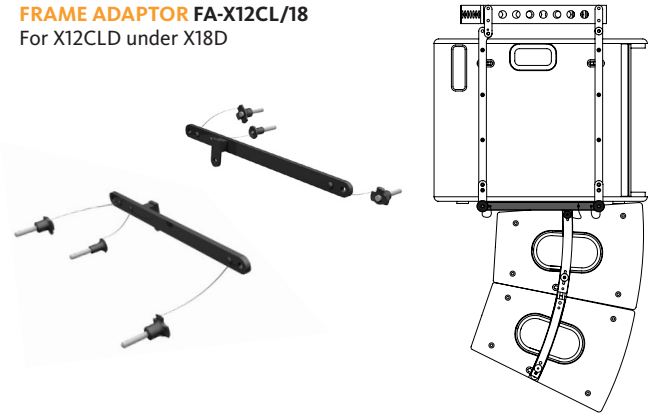
FLIGHT CASE FC-X12CL

For two units of X12CLD



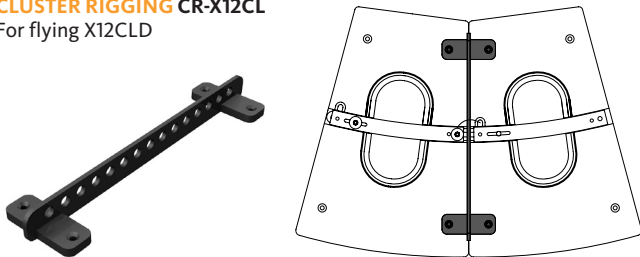
FRAME ADAPTOR FA-X12CL/18

For X12CLD under X18D



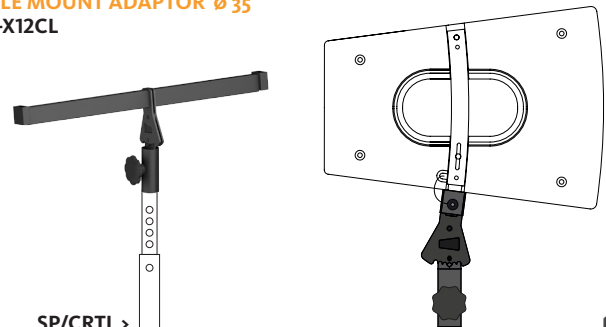
CLUSTER RIGGING CR-X12CL

For flying X12CLD



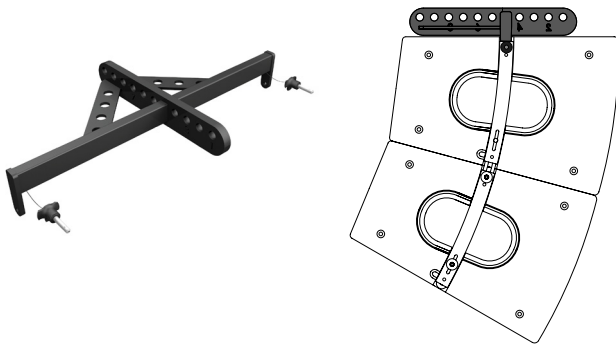
POLE MOUNT ADAPTOR Ø 35

PA-X12CL



TOURING BUMPER TA-X12CL

For flying X12CLD



SP/CRTL >

DISTANCE ROD M20

SP-CRTL

Ø: 35 mm

Length: 55 cm ~ 90 cm

Thread: M20

M8 RIGGING EYEBOLT

ACR-M8



RECOMMENDED CONFIGURATION (FOR 4 UNITS)

Full range stereo configuration
(2x X12CLD left + 2x X12CLD right)
Maximum 2 X12CLD in parallel per Xamp3K amplifier

