



Outstanding sound quality and power handling define this 2-way system that fits every kind of installation. The low frequency and punch of a 15" with a very high definition in the mid-range, topped with a high directivity horn that projects the mid-high with astonishing accuracy. Suitable also for clustering!

## KEY FEATURES

### TRANSDUCER TECHNOLOGY

Two-way passive speaker system composed by one 4-inch voice coil, neodymium magnet, 15" loudspeaker and a 2.5" titanium diaphragm neodymium driver coupled to a 60° x 50° horn.

### POWER

2000 W continuous power in musical program.

Accurate internal passive crossover achieves an optimum performance while including a protection on high frequency driver.

### READY FOR THE CLUB... AND BEYOND

Xcellence DISCO series has been carefully designed to deliver a high sound pressure level while keeping a TOP audio quality. A compact design, but yet with great power handling loudspeakers, makes it suitable for all kind of clubs or other venues requiring high performance passive systems.

### DESIGN & ACCESSORIES

Unique design in black & grey colour.

Several accessories allow easy flying. A 35 mm socket for mounting the loudspeaker on a speaker stand is provided at the bottom of the cabinet.

Ergonomic handles for an easy handling.

Baltic birch plywood wooden cabinet with Polyurea® coating, offering maximum reliability and strength for high demanding applications.

### LONG-TERM RELIABILITY

We have invested in, and applied, the very best knowledge, materials and technology to deliver the ultimate product. Every detail has been considered, featuring the new steel grille with custom punch hole, smart accessories for a trouble-free installation, and the new double-colour Polyurea® coating, not only do they contribute to an extraordinary look, they also look forward high protection and resilience.

X15D

# FULL-RANGE 15" 2-WAY PASSIVE SPEAKER SYSTEM

Xcellence

LONG  
THROWUNIQUE  
DESIGNLIGHT NEODYMIUM  
COMPONENTSHIGH RESISTANT  
POLYUREA® PAINTACCESSORIES FOR  
EASY INSTALLATIONSMULTIPLE PRESETS  
AVAILABLE with external  
Amate Audio amplifier & DSP

## TECHNICAL FEATURES

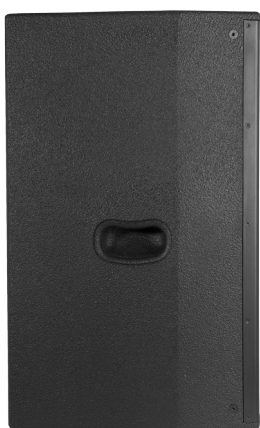
Power (musical program)	2000 W
Power (AES)	1000 W
Nominal impedance	8 Ω
Crossover frequency	1k2Hz
Frequency range (-10 dB)	44 Hz – 19 kHz (with external DSP)
Directivity (HxV)	60° x 50° (rotatable horn)
Directivity factor (Q)	20
Directivity Index (DI)	13 dB
SPL (1W/1m)	99 dB
Maximum SPL (continuous/1 m)	132 dB
Maximum SPL (peak/ 1m)	135 dB
Components	LF-MF HF
	15" neodymium woofer (4" voice coil) 2.5" titanium diaphragm neodymium driver
Weight	30.5 kg
Dimensions (HxWxD)	720 x 450 x 460 mm
Finish	Multilayer baltic birch plywood with high resistant black & grey Polyurea® coating
Grille	1.5 mm steel
Rigging	M8 points
Input connectors	2x NL4MPR Neutrik® Speakon



BOTTOM VIEW



TOP VIEW

FRONTAL VIEW  
WITHOUT GRILLE

SIDE VIEW



REAR VIEW



CONNECTION PANEL

X15D

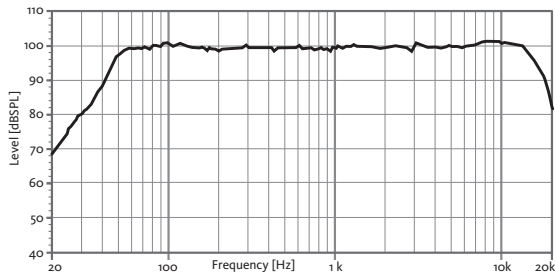
# FULL-RANGE 15" 2-WAY PASSIVE SPEAKER SYSTEM

Xcellence



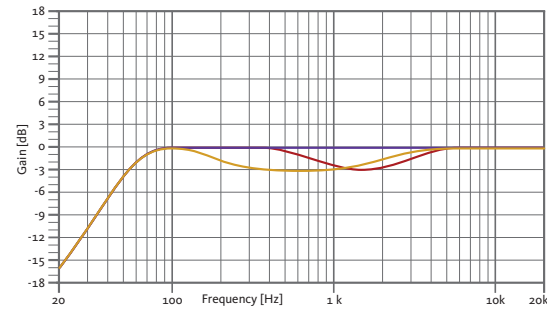
## FREQUENCY RESPONSE 1W/1m

With external Amate Audio DSP &amp; HD3200 Amplifier



## RECOMMENDED PRESETS

With external Amate Audio DSP



### FLAT

Flat response

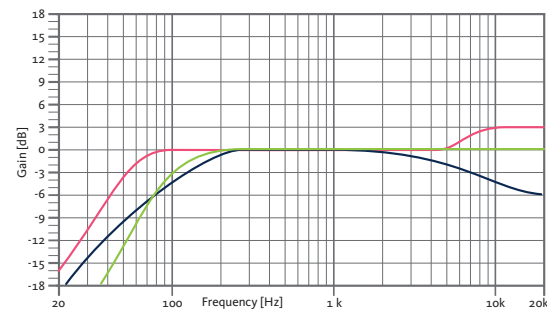
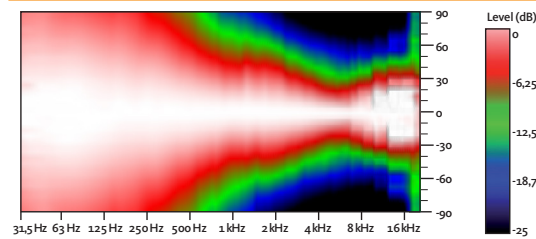
### NEARFIELD

-3 dB mid frequencies  
(800 Hz – 3 kHz)

### NEARFIELD+

-3 dB mid frequencies  
(200 Hz – 3 kHz)

## HORIZONTAL COVERAGE



### SPEECH

-6 dB low / -6 dB high

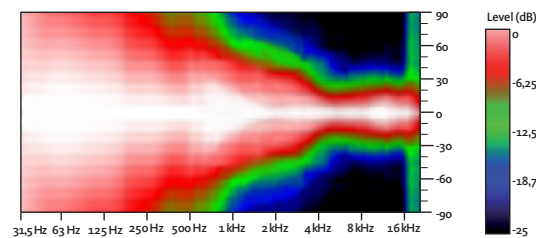
### XOVER

HPF 100 Hz

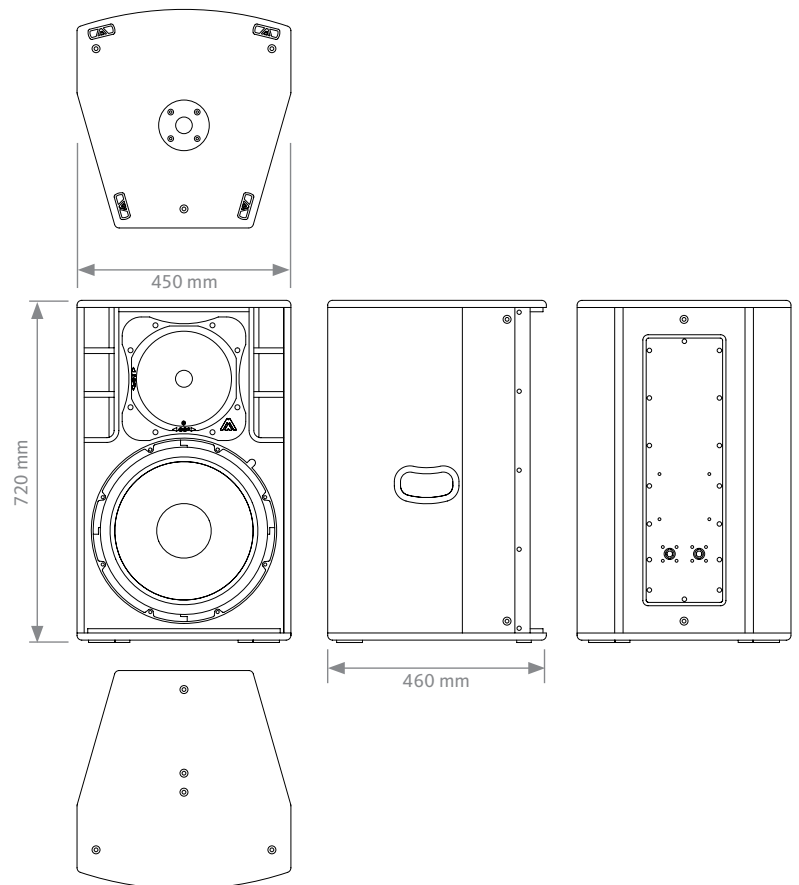
### DISCO

+3 dB very high frequencies

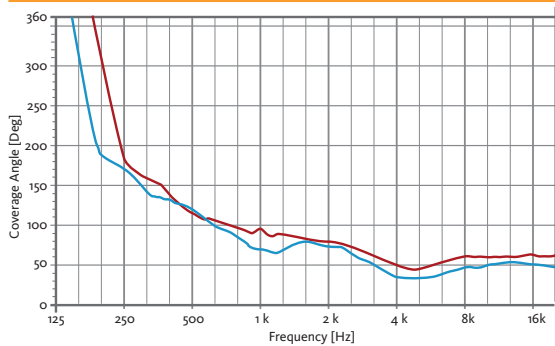
## VERTICAL COVERAGE



## CAD DRAWING SCHEME

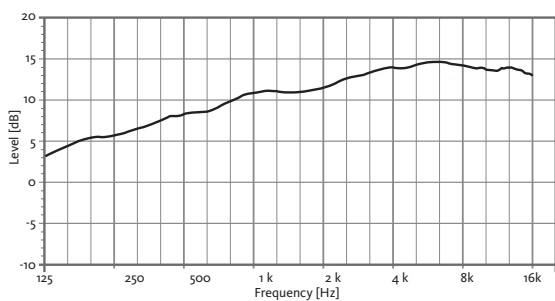


## HORIZONTAL & VERTICAL BEAMWIDTH (-6dB point)



HORIZONTAL VERTICAL

## DIRECTIVITY INDEX (DI)



X15D

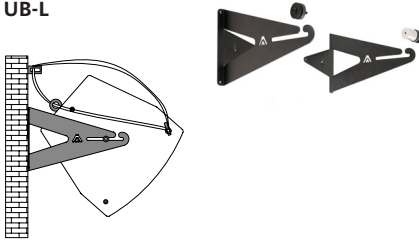
# FULL-RANGE 15" 2-WAY PASSIVE SPEAKER SYSTEM

Xcellence



## ACCESSORIES

### WALL MOUNT BRACKET UB-L



### FLYING BAR HR-1215



### HOOK FOR FLYING BAR GT-50HR



### ADJUSTABLE WALL STAND SP-35



### M8 RIGGING EYEBOLT ACR-M8



### SAFETY SLING SC-15



### DISTANCE ROD M20 SP-CRTL Length: 55 cm ~ 90 cm Ø: 35 mm Thread: M20



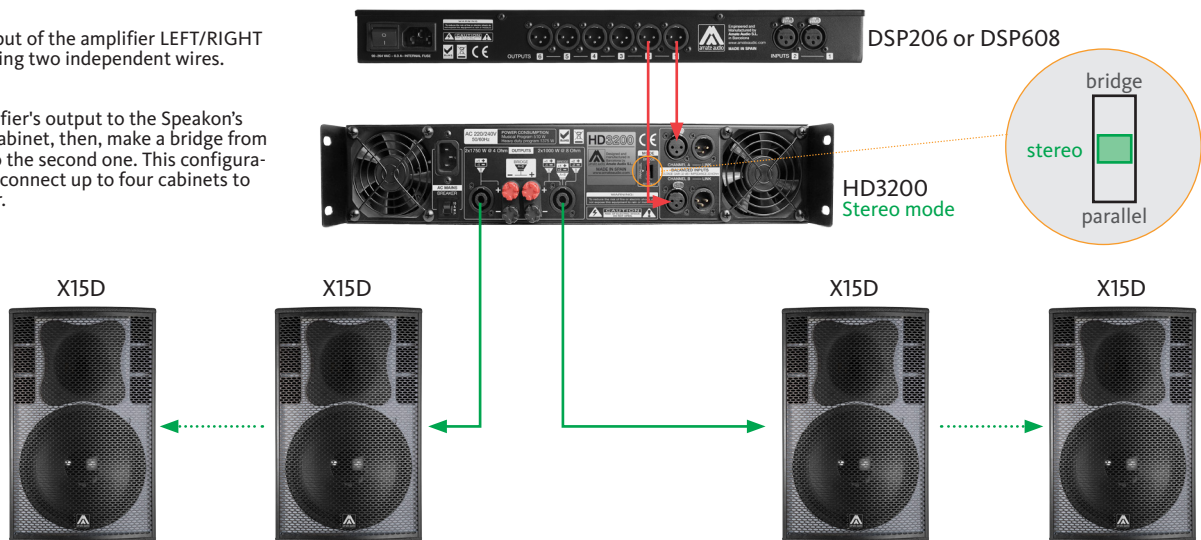
## RECOMMENDED CONFIGURATION

### FOR 2 UNITS

Connect each output of the amplifier LEFT/RIGHT to each cabinet using two independent wires.

### FOR 4 UNITS

Connect the amplifier's output to the Speakon's input of the first cabinet, then, make a bridge from the first cabinet to the second one. This configuration allows you to connect up to four cabinets to the same amplifier.



## THE BEST COMBINATION

The best experience of Xcellence DISCO systems is reached with Amate Audio's HD Series amplifiers and DSP206/608 digital signal processors. Factory presets are available to setup the system in a short time.



HD Series – high dynamic professional power amplifiers



DSP Series – digital loudspeakers management system