

X210

2x10" LINE ARRAY
SYSTEM

Xcellence



Breakthrough technologies, cutting-edge acoustic design, the highest quality, precision-engineered, customised components and materials – X210 is the flagship of the Xcellence series and the epitome of audio perfection. What are you waiting for?...

KEY FEATURES

TRANSDUCER TECHNOLOGY

Two-way line array active speaker system composed by two 2.5-inch voice coil, neodymium magnet, 10" loudspeakers and three 1.75-inch PEN diaphragm neodymium drivers coupled to a 120° x 7° exclusive high performance waveguide.

AMPLIFICATION

Each X210 line array system is constructed in multiples of two modules: one active unit X210A, which includes the amplification and the digital signal processor (DSP) and one passive unit X210P, which is driven by the X210A.

3rd generation Class D built-in amplifier with a total power of 3000 W, controlled by a dedicated DSP.

90% efficiency amplifier SMPS (switching mode power supply), allowing maximum power delivery with minimum consumption in an extremely low-weight and reduced size.

Rear connections and control panel with LCD screen to display the different settings, presets and adjustments done by the user. A capacitive keyboard guarantees the reliability of the system even under humidity and extreme weather conditions.

Exclusive and unique Overvoltage Protection which continuously monitors line voltage and instantly disconnects the system if the line voltage exceeds the maximum permissible level.

DSP & CONTROL

Internal DSP with all necessary signal processing (crossovers, EQs, delay, limiters, gain control, mute) as well as several useful presets to adjust X210 to different requirements.

Ethernet connection and full wireless control. The system can be monitored from any spot in the room.

DSPStudio® control software capable of adjusting and setting-up even the finest details and monitoring key parameters of the amplifier: input and output levels, clip limiter activation, amplifier temperature and network connection status.

DESIGN & ACCESSORIES

Several accessories allow easy flying. Inter-cabinet connection is set via front-mounted fix linking plates and angles are set via rear-mounted adjustable plates.

Ergonomic handles for an easy and comfortable transport.

Baltic birch plywood cabinet with Polyurea® coating, offering maximum reliability and strength for touring as well as for high demanding applications.

X210

2x10" LINE ARRAY
SYSTEM

Xcellence

**DSP STUDIO CONTROL APP**
FOR IPAD & WINDOWS**WITH CWK-D****EXCLUSIVE HIGH
PERFORMANCE
WAVEGUIDE****LIGHT NEODYMIUM
COMPONENTS****> 250 V
OVERVOLTAGE
PROTECTION****MULTIPLE PRESETS
AVAILABLE****HIGH RESISTANT
POLYUREA® PAINT****ACCESSORIES FOR
EASY INSTALLATIONS****TECHNICAL FEATURES**

Amplifier (program power)	2400 W (LF) + 600 W (HF) – Class D Bi-amplified
Input sensitivity	8 dBu – 1.94 V
Input Impedance	20 kΩ Balanced
Mains	Universal Switch Mode Power Supply 85-265 V / 45-65 Hz
Average current draw	3.8 A (Heavy duty musical program)
SPL (1 m)	134 dB continuous, 137 dB peak
Built-in DSP	48 bit
AD/DA converters	24 bit – 96 kHz
Presets	LFX TEND / COMPACT / NEARFLD / LONGTHR W / STACK2 + 23 configurable user memories
Crossover frequency	1k1Hz
Frequency response (-10 dB)	70 Hz – 18 kHz
Components	LF 2x 10" neodymium woofers (2.5" voice coil) HF 3x 1.75" PEN diaphragm neodymium drivers
Directivity (HxV)	120° x 7°
Directivity factor (Q)	64
Directivity index (DI)	18 dB
Weight	37 kg (X210A) / 33 kg (X210P)
Dimensions (HxWxD)	314 x 764 x 574 mm
Finish	Multilayer baltic birch plywood with high resistant black Polyurea® coating
Grille	1.5 mm steel with grey micro-foam cloth
Rigging	Stainless-steel integrated rigging bars
Connectors	1x XLR input / 1x XLR link / 1x AC PowerCon input / 1x AC PowerCon link / 1x EtherCon RJ45 input / 1x EtherCon RJ45 link



SIDE VIEW



FRONTAL VIEW WITHOUT GRILLE



TOP VIEW



REAR VIEW

X210 SET (1x X210P + 1x X210A)

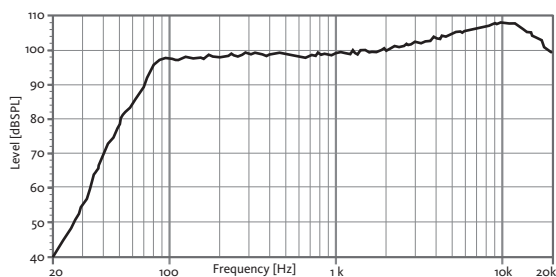
X210

2x10" LINE ARRAY
SYSTEM

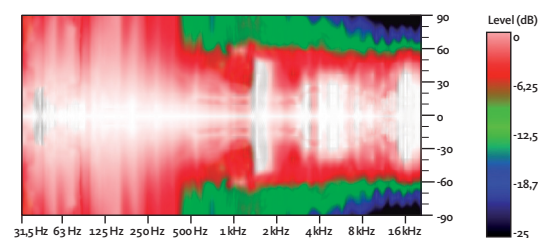
Xcellence



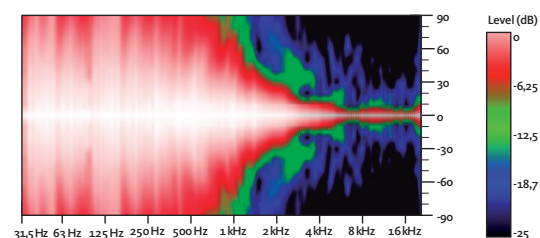
FREQUENCY RESPONSE 1W/1m (LFXTEND PRESET) ONE CABINET



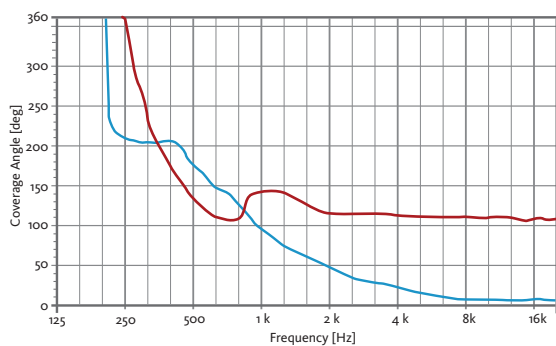
HORIZONTAL COVERAGE



VERTICAL COVERAGE

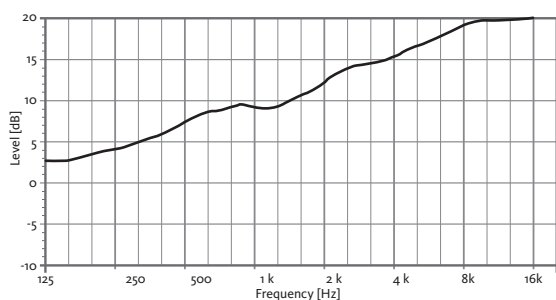


HORIZONTAL & VERTICAL BEAMWIDTH (-6dB point)



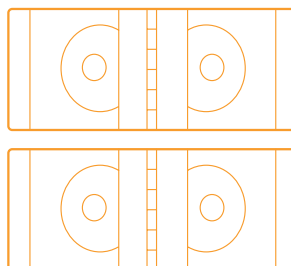
HORIZONTAL VERTICAL

DIRECTIVITY INDEX (DI)



X210 SET

1x X210P (passive)
1x X210A (active)



X210P
+
X210A



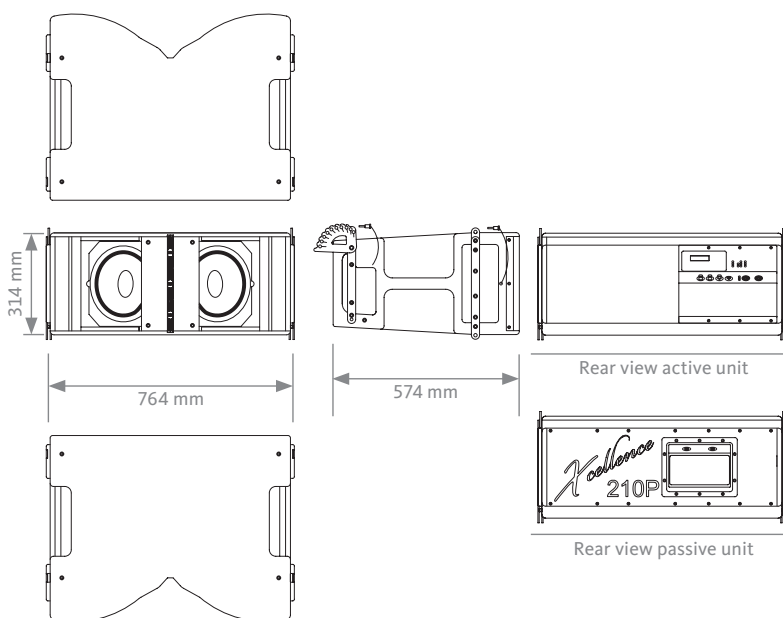
X210A ACTIVE MODEL



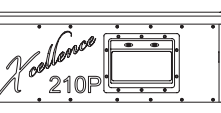
X210P PASSIVE MODEL

CONNECTION PANEL

CAD DRAWING SCHEME



Rear view active unit



Rear view passive unit

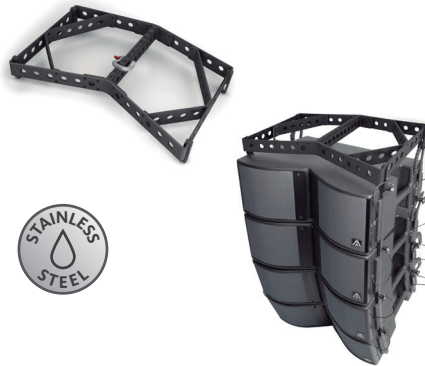
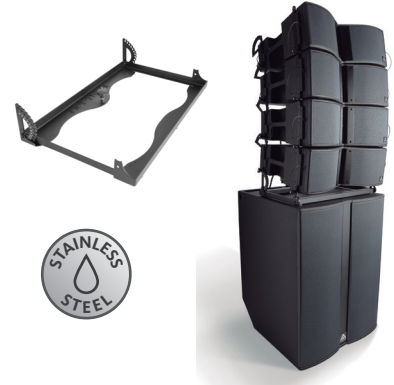
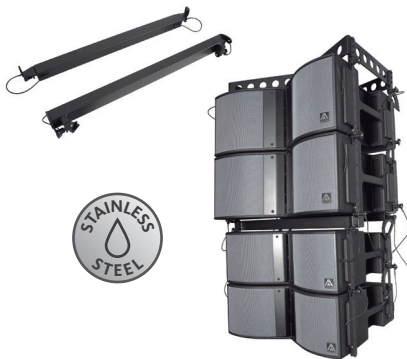
X210

2x10" LINE ARRAY
SYSTEM

Xcellence



ACCESSORIES

FLIGHT CASE FC-X210
For four units of X210**TOURING BUMPER TA-X210R**
For flying X210**STACKING FRAME FR-X210**
For X210 over X218W3K**FRAME ADAPTOR FA-X208/210**
For X208 underneath X210**STACKING KIT ST-X215**
For X210 over X215W**WIRELESS COMMUNICATION KIT CWK-D**
Bespoke control protocol that supports Wi-Fi connectivity through CWK-D

DSP STUDIO CONTROL SOFTWARE

*"Instant access to outstanding sound"*

1

Configure your
wifi network

2

Detect
loudspeakers

3

Setup audio
settings

4

Enjoy the
best sound

The application utilises a bespoke control protocol that supports Wi-Fi connectivity (control over IP).

It allows to address the ethernet-enabled amp and DSP modules in the Xcellence series cabinets, affording the user visual feedback on amplifier status and the ability to edit processor values from any spot in the venue.

You can edit parameters such as crossover frequency, gain (per way and separately mutable), limiter, polarity, delay, five custom parametric EQs or an array of filter shapes, can all be adjusted in fine detail, with several elements controllable at the same time using grouping functions.

The app also provides comprehensive information about input and output levels, heat-sink temperature, clip and protection indicators.

iPad
VERSIONPC
VERSION

Download it from
our website:
www.amateaudio.com