

MK20RC & MK20HD

PTZ Camera Remote Control. Multi-Format HD PTZ Camera.

MK20HD

- Ultra quiet direct pan and tilt drives
- Pan/tilt rotation angle: Horizontal 360° / Vertical 125°
- 30x optical zoom
- HDMI, CAT 5/6 HDMI and HD-SDI output formats
- Supports RS422 and RS485 remote control
- CAT5/6 HDMI Output
- 1/2.8" CMOS 2.4 Megapixel Sensor
- Continuous 360° pan

MK20RC

- Controls up to 5 MK20HD cameras
- 30 camera presets, 10 hot key presets & 10 PTZ camera position presets
- Supports RS-422 and RS-485 for up to 3200 feet (MK20RC-1 supports RS-422 and LAN for IP and serial connections)
- Variable pan, tilt, zoom and focus speed control by analog levers
- Reversible Y-axis Joystick
- Tally light indicators
- Compatible with select Sony VISCA PTZ cameras



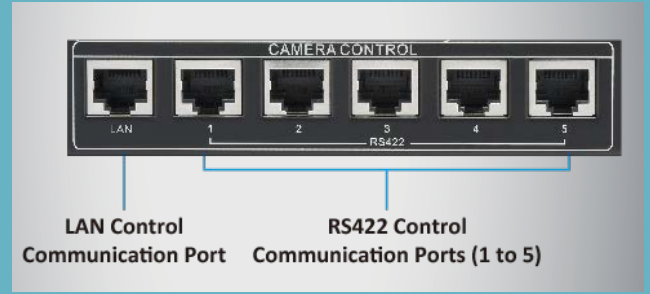
Wide Range of Compatibility

The MK20RC fully supports VISCA remote protocol, making it compatible with Sony's existing remote camera models. New user is guaranteed a stress free implementation into an existing setup nor worry about future remote PTZ cameras upgrade and compatibility issues.

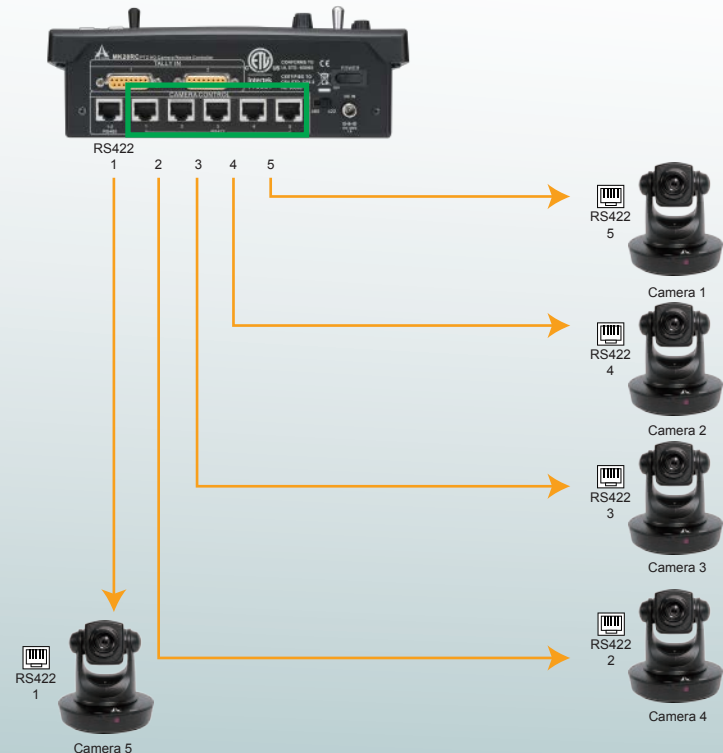


Communication Port Select Switch

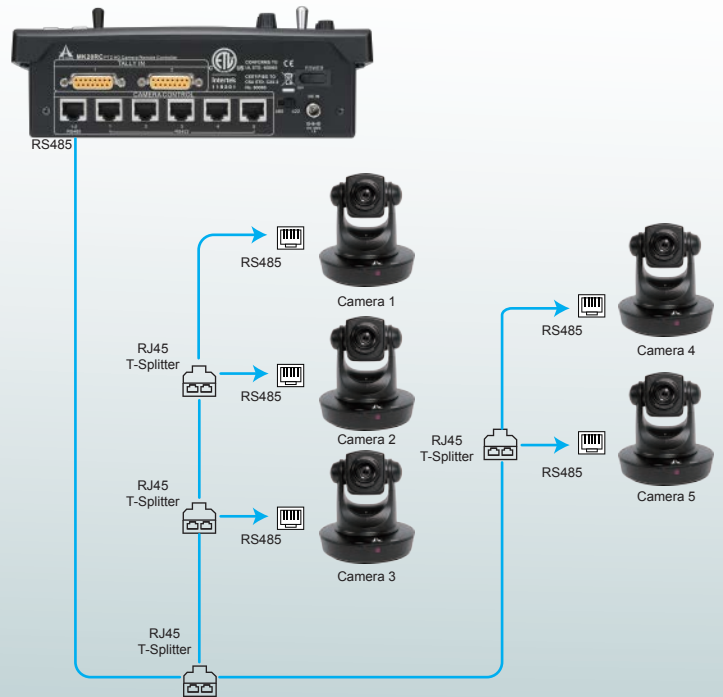
Features a Communication Port Select Switch for instant switch between RS422 and RS485 standard serial interfaces allowing point-to-point mode or daisy-chain mode.



Point to Point Control Configuration

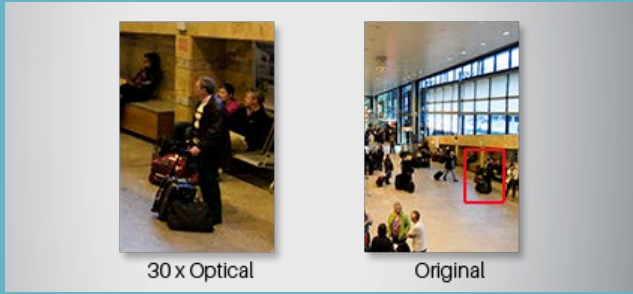


Daisy Chain Control Configuration



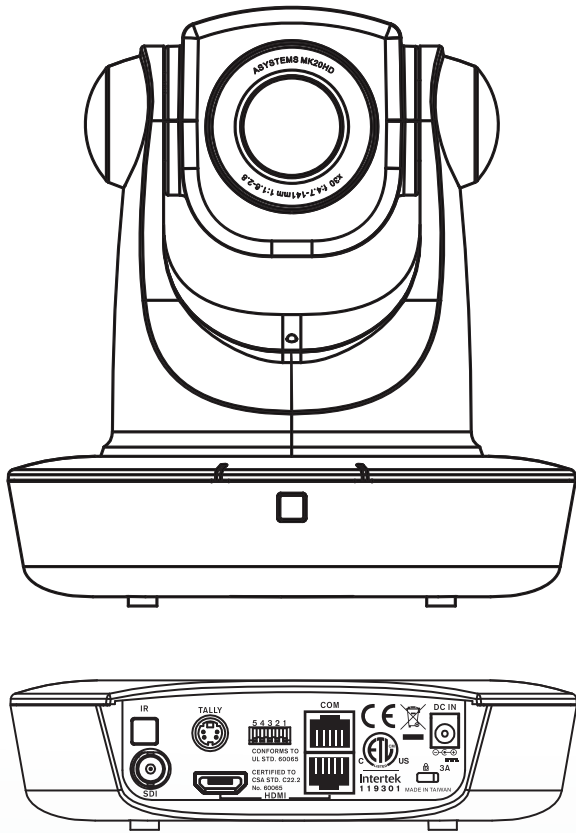
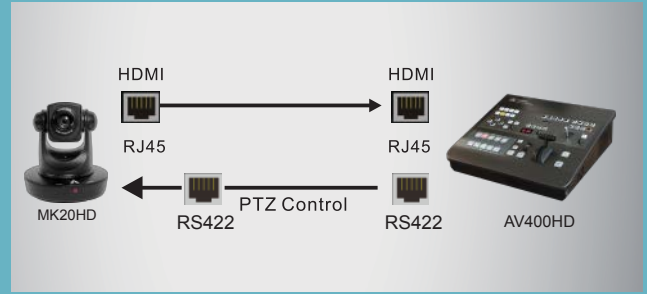
30x Optical Zoom

MK20HD is a compact, robotic, full HD camera integrated with a pan-tilt head and featuring a 1/2.8" HD 2.4 Megapixel CMOS image sensor and a wide focal ratio of 1.6 to 2.8 coupled with 30x optical zoom.



Long Range Signal Transmission

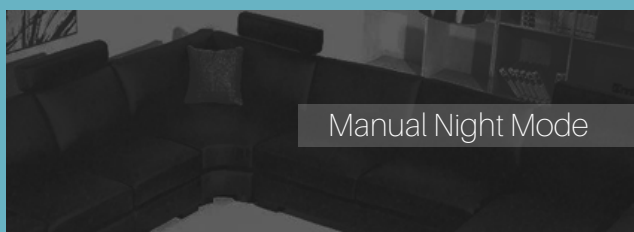
MK20HD supports RS422 and RS485 standard serial interface for long range signal transmission for up to 1000 meter



Asystems offers the MK20HD multi-directional full high-definition camera for use with the AV series video switchers and editing consoles. The unit offers real-time PTZ with wide rotation angle as well as a 30x optical zoom. Output connection is achieved via CAT 5 digital video in SDI and HDMI formats. The MK20HD also supports HD-SDI (optional). The camera can be controlled via RS422 and RS485 protocols and is compatible with the Asystems MK20RC remote control.



*IR Remote included with the purchase of MK20HD.



Full HD Video Output

Featuring an uncompromising and superior optical 30x zoom lens, the MK20HD achieves true high-quality 1080p video shooting that overflows with ambiance.



Specifications

MK20RC

Features	Type	Descriptions
Pan & Tilt Joystick	Analog	Variable speed (3 speed); reversible Y-Axis (Tilt)
Focus	Rotary Knob (Manual)	Variable speed knob
	Auto	Button, enable auto focus.
Zoom	Auto	Variable speed (3 speed)
	Hi	Fixed high speed zoom
	Lo	Fixed low speed zoom
Camera Support		5
Preset Memory		30, 10 hot key presets & 10 PTZ camera position presets
Tally Light	DA15	x2, PGM & PVW
Communication	RJ-45	RS422 x5
	RJ-45	RS485 x1 (up to 1000m, Daisy Chain 5 cameras)
Top Panel Functions		WHT BAL, AE, Shutter, Iris, Control Enable, Mute, Preset 1~10, Set, Camera 1~5 Select, White Balance, Gain, AWC, Scene, Menu, Bank, Enter, Save, ESC, Del, F1, F2, Pan, Tilt, Focus and Zoom
Power		DC 12V TBD A, external power adapter
Dimensions	W x D x H	210mm x 180mm x 66mm

MK20HD

MK20HD	Descriptions
Sensor	
Type	1/2.8" Sony Emor CMOS
Pixel	2.4 Megapixel
E-Shutter	1/1 - 1/10,000 sec
Illumination	Color 0.4Lux @ F1.6 Night Mode 0.003Lux (B/W)
White Balance	Auto & Manual
S/N	> 50dB
Lens	
Focus	4.7 - 141mm
Iris	F1.6 - F2.8
Zoom	30x Optical
PTZ	
Pan Speed	1 - 300° per second
Tilt Speed	1 - 125° per second
Pan Rotation	360° continuous
Tilt Angle	125°
Video	
Resolution	1080p 25/30
Scanning System	Progress Scan
Signal System	PAL / NTSC
Remote Control Interface	RS422 & RS485
Communication Protocol	VISCA
Output	HDMI HD-SDI CAT5 / 6 HDMI
Connection	Serial