

## 10.1" Touch Panel

### VK330

The ATEN VK330 is a 10.1" Touch Panel, featuring capacitive multi-touch TFT-LCD screen. Natively installed with the ATEN Control System app, the touch panel is compatible with ATEN Control Box and Control Pad.

The VK330 supports Power over Ethernet (PoE), which allows power and data to be carried over a single Ethernet cable to the touch panel, and makes it perfect to support the specific environments with those applications required solid and wired connection to ensure stability and high security demands.

It is an ideal solution for the high-security area such as militaries, hospitals, government offices, and corporate board rooms. For flexible installation, an additional wall mount kit (ATEN VK302) is available; the touch panel can be also desk mounted using the tabletop kit (ATEN VK304) or any standard VESA 75 x 75 mm mounts.

The ATEN Control System is a standard Ethernet-based management system consisting of controllers, expansion boxes, configurator, and control interfaces that connects all hardware devices to provide centralized control of devices directly and effortlessly from any mobile device or ATEN Control System interface. Now we have the VK330 touch panel join the ATEN Control System family to make our control system solution complete and that meets the demanding requirements for the target applications.

VK330



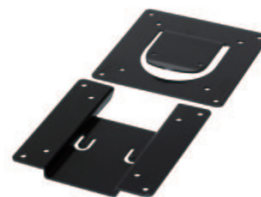
VK330 + VK304



VK304 (Tabletop Kit)



VK302 (Wall Mount Kit)



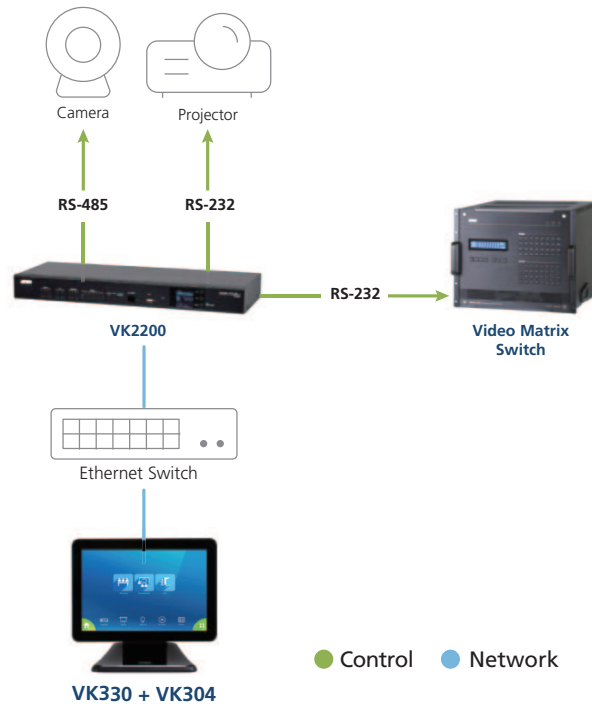
The Touch Panel VK330, the Tabletop Kit VK304 and the Wall Mount Kit VK302 are sold separately.

## Features

- 10.1" touch panel
- Natively installed with ATEN Control System app and designed for the integrated use with the ATEN Control System
- Supports AppSwitcher to allow multiple apps to be switched and operated
- Integrated with ATEN Unizon and ATEN Room Booking system to display room usage and operating status
- Allows administrators for central control of multiple rooms via profiles
- Restricts user access to profiles via password authentication
- Synchronization of system control among multiple ATEN Touch Panels, mobile devices and tablet computers
- Demo mode enables friendly demonstration without connecting a controller while familiarizing the users with the solution's most important functions
- Screen Saver function helps energy saving and prolongs the lifetime of the touch screen
- Allows for Display Real-time Streaming Protocol (RTSP), ONVIF and ATEN VE89 series video preview\*
- Supports Power over Ethernet (PoE), which allows it to receive power and communication over a single Ethernet cable
- Flexible installation thanks to the support for VK302 Wall Mount Kit, VK304 Tabletop Kit, and any standard VESA 75 x 75 mm mounts

\***Note:** The function is applicable to VK2200 / VK1200.





## Specifications

	VK330
<b>Processor</b>	Quad-core
<b>Memory</b>	
SDRAM	2GB
Flash	16GB
<b>Touch Panel Display</b>	
Display Type	TFT-LCD
Size	10.1"
Touch Screen	Capacitive
Resolution	1280 x 800
Aspect Ratio	16:10
Color Depth	8 bit
Contrast Ratio	800:1
Backlight	LED
Viewing Angle	± 85° (H), ± 85° (V)
Luminance	500 cd/m <sup>2</sup>
<b>Interfaces</b>	
Ethernet	1 x RJ-45 Female, 10 / 100 / 1000 BaseT
<b>USB</b>	1 x USB Type-A
<b>Power Inputs</b>	
Power over Ethernet (PoE)	802.3 at PoE+
<b>Power Consumption</b>	DC12V:12.8W PoE:14W
<b>Environmental</b>	
Operating Temperature	0 – 40 °C
Storage Temperature	-10 – 55 °C
Humidity	10 – 80% RH, Non-Condensing
<b>Physical Properties</b>	
Housing	Plastic
Weight	0.68 kg
Dimensions (L x W x H)	25.22 x 17.78 x 2.45 cm

