

Highlights:

- 450 Watt program power
- Low frequency extension down to 54Hz without processing
- 124 dB of Max SPL (continuous)
- Architecturally discreet and compact design
- Immersive sound experience
- Tailor-made high-excursion driver for superior performance
- Flexible ceiling & wall mount option

Product information:

The ARCHI Series combines architectural elegance with groundbreaking audio performance. Designed for bars, restaurants, hospitality, and residential applications, these compact subwoofers deliver immersive sound with minimal visual impact.

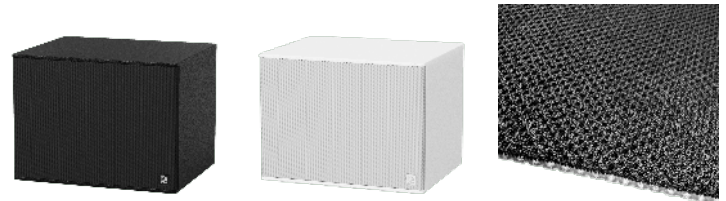
Featuring innovations like AcoustiMesh for acoustic neutrality, AeroVent for noise-free bass performance, and WeatherTreated capabilities, the ARCHI Series excels indoors and outdoors. With low-frequency extensions down to 26Hz, flexible mounting options, and durable materials, the ARCHI Series redefines low-frequency fidelity, offering powerful, precise bass in a discreet, stylish design.

ARCHI10: Compact Precision

The ARCHI10 model offers a perfect balance of style and performance. Its bass reflex design, combined with AcoustiMesh – an acoustic neutral 3D fabric – ensures clean, immersive audio with precise low frequencies. The polyurea-coated 15mm multiply plywood enclosure enhances durability, while the waterproof paper cone adds resilience to the design, ensuring reliable performance over time. Perfect for indoor applications, the ARCHI10 delivers powerful bass in a compact and stylish form factor.

Applications:

- Bars & Restaurants
- Hotels
- Residential



Impedance:

Ω 8 Ohm

Usage:



Indoor

System specifications:

Speaker type		10" Bass reflex cabinet
Peak power handling		900 W
Program power handling		450 W
Continuous power (AES)		225 W
Impedance		8 Ω
Max SPL (Continuous)		124 dB
Sensitivity (1W/1m)		98 dB
Frequency	Response (- 3 dB)	69 Hz - 120 Hz
	Range (-10 dB)	54 Hz - 200 Hz
Bass port tuning frequency		51 Hz
Connectors		Terminal block with linkthrough
Drivers		10" Ferrite with low-loss suspension and 1.5" 4-layer wound voice coil
Cone material		WeatherTreated Paper

Product Features:

Dimensions	405 x 300 x 334 mm (W x H x D) (excluding feet)
	405 x 312 x 334 mm (W x H x D) (including feet)
Weight	11.2 kg
Operating temperature	-20 °C ~ 70 °C
Construction	15 mm MDF with multi-layer Polyurea coating
Front finish	AcoustiMesh
Colours	Black & White

Variants:

- ARCHI10/B - Black version
- ARCHI10/W - White version

