

CP43/45HDM

Connection plate with HDMI Pigtail

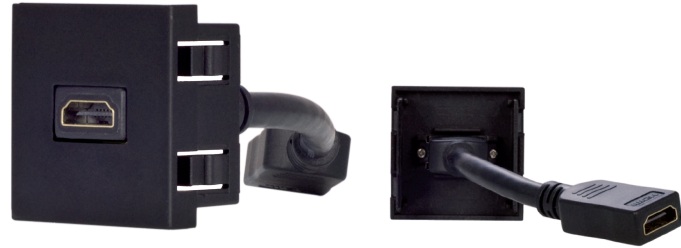
AUDAC

► Features

- HDMI Pigtail connection plate
- Female HDMI connector on Front & Pigtail
- High Speed HDMI with Ethernet compliant
- Flexible system
- Compatible with Audac, Niko, Legrand or other 45 x 45 mm (CP45HDM) and bTicino (CP43HDM) installation materials
- Slim design
- Easy installation

► Applications

- Private houses
- Industrial buildings
- Offices
- Conference rooms



The CP43/45HDM are connection plates containing an HDMI pigtail with a female 19-pin HDMI Type A connector on the front panel and a female 19-pin HDMI Type A connector on the other end of the pigtail.

This enables to integrate your HDMI cables and connectors into walls, ducts or junction boxes, allowing carefully connecting media input devices like Media-players, Computers, Laptops, Mobile devices to display devices like Flatscreens, Beamer, ...

The connection plate is available in two different sizes, 43 mm and 45 mm, depending of the used installation materials. The 45 mm version is compatible with Audac, Niko, Legrand and other 45 x 45 mm installation materials, while the 43 mm versions is designed to be used in combination with bTicino installation materials.

The 19-pin HDMI Type A connector has a gold-plated finish to ensure a good connection and is compatible with all different kinds of standard HDMI cables, even supporting High-Speed HDMI with Ethernet.

Due to it's slim and good looking design, these connection plates will blend into all kinds of different environments or interiors.

For the 45 mm version are two different cover frames with metal subframe are available for 1 (CP45CF1) and 2 (CP45CF2) units.

Available in Black (/B) and White (/W).

► Specifications

| PRODUCT FEATURES | | |
|--|---|------------------------|
| Dimensions (Width x Height x Depth) | 45 x 45 x 60 mm | |
| Weight net | 0.06 Kg | |
| Pig tail length | 15 cm (including connectors) | |
| Connectors | 2 x female 19-pin HDMI Type A | |
| HDMI Standard | High Speed HDMI with Ethernet | |
| Built-in depth | Min. 60 mm | |
| Construction | ABS | |
| HDMI connector width | 20 mm | |
| Finish | Soft-touch painting | |
| Mounting | 45 x 45 mm Audac / Niko / Legrand | CP45HDM |
| | 43 x 43 mm bTicino | CP43HDM |
| Colour | White (RAL9010) | CP43HDM/W CP45HDM/W |
| | Black (RAL9005) | CP43HDM/B CP45HDM/B |
| SHIPPING & ORDERING | | |
| Packaging | Carton box | |
| Shipping weight & volume | 70 g - 0.0002 Cbm | |
| Optional accessories | CP45CF1 Cover frame (1 unit) | |
| | CP45CF2 Cover frame (2 unit) | |
| *AUDAC reserves the right to change specifications without notice: this is part of our policy to continually improve our product | | |