

# VC3036/4036

## Volume Control

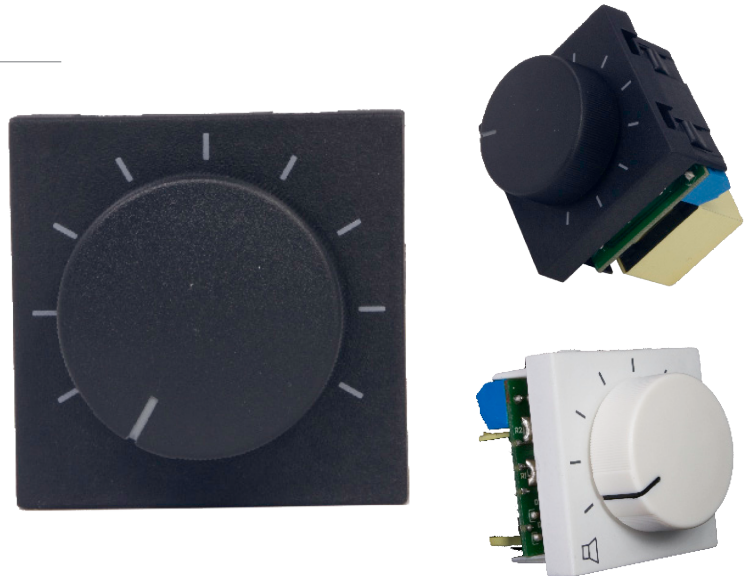
# AUDAC

### ► Features

- Flexible system
- Compatible with Niko, Legrand and bTicino installation materials
- 36 Watt power rating
- 10 steps of 3dB
- Built in relay for priority signals
- Slim design
- Blends beautifully into walls
- Easy installation

### ► Applications

- Private houses
- Industrial buildings
- Offices



The VC3036 and VC4036 are AUDAC's flush mount wall volume controllers.

They are compatible with Audac, Niko, bTicino and standard U40 installation materials. And are available in black (B) and white (W).

The volume is adjustable with a rotatable knob in ten steps of 3dB and the maximum power rating is 36 Watt.

A built-in relay makes it possible to build priority circuits between several controllers.

Due to its slim and good looking design, these volume controls will blend into all kinds of different environments or interiors.

The construction of the VC3036 and VC4036 is made with sturdy ABS and therefore suitable for big projects in industrial buildings to the standard installation into home design interiors.

The connections are made at the back with screw clamp connectors.

The associated coverplates for the VC3036 are the AUDAC CP45CF. They have to be ordered separately.

The VC4036 is designed to be used in combination with bTicino coverplates.

### ► Specifications

SYSTEM SPECIFICATIONS		
Max power	36 W	
RMS power	36 W	
Max. operation voltage	100 V	
Attenuation	9 x 3 dB	
Relay	24 V - 25 mA	
PRODUCT FEATURES		
Dimensions (Width x Height x Depth)	45 x 45 x 60 mm	VC3036
	43 x 43 x 60 mm	VC4036
Weight net	150 g	
Construction	ABS	
Mounting	Audac / Niko	VC3036
	bTicino	VC4036
Colour	White (RAL 9010)	VC3036/W VC4036/W
	Black (RAL 9005)	VC3036/B VC4036/B
SHIPPING & ORDERING		
Packaging	Carton box	
Shipping weight & volume	150 g - 0.000259 Cbm	
Accessories	CP45CF1 Cover frame	
	CP45CF2 Cover frame	
*AUDAC reserves the right to change specifications without notice: this is part of our policy to continually improve our product		